

## PR01 SERIES PRESSURE REGULATOR

PR01 series stainless steel pressure regulator has single stage diaphragm pressure reducing structure, pressure delivered by stainless steel diaphragm, constant outlet pressure, suitable for purified gas, standard gas, corrosive gas etc.

### Design features:

- \* Single stage pressure reducing structure
- \* Metal to metal diaphragm seal
- \* Body inlet and outlet port: 1/4"NPT Female
- \* Easy to clean structure
- \* Filter mesh inside
- \* Panel mount or wall mount

### TYPICAL APPLICATIONS:

Laboratory, Gas Chromatograph, gas laser, gas manifold system, petroleum chemistry, and test equipment

### Specifications:

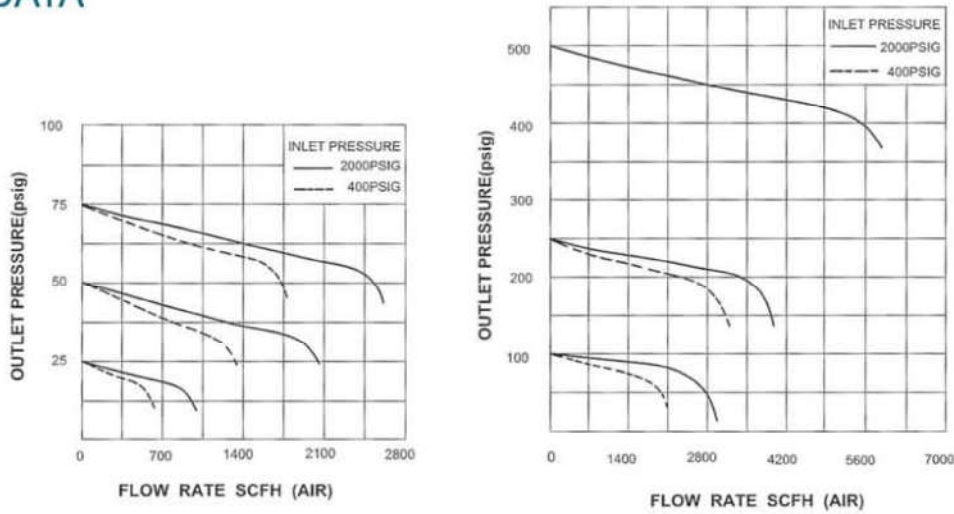
Maximum input pressure: 500, 2200, 3000psi  
 Output pressure: 0-25, 0-50, 0-100, 0-250, 0-500psi  
 Proof pressure: 1.5 times of maximum rated pressure  
 Working temperature: -40 + 165 deg F (-40 +74 deg C)  
 Inboard leakage:  $2 \times 10^{-8}$  atm cc/sec He  
 Flow capacity:  $C_v = 0.08$

### Material:

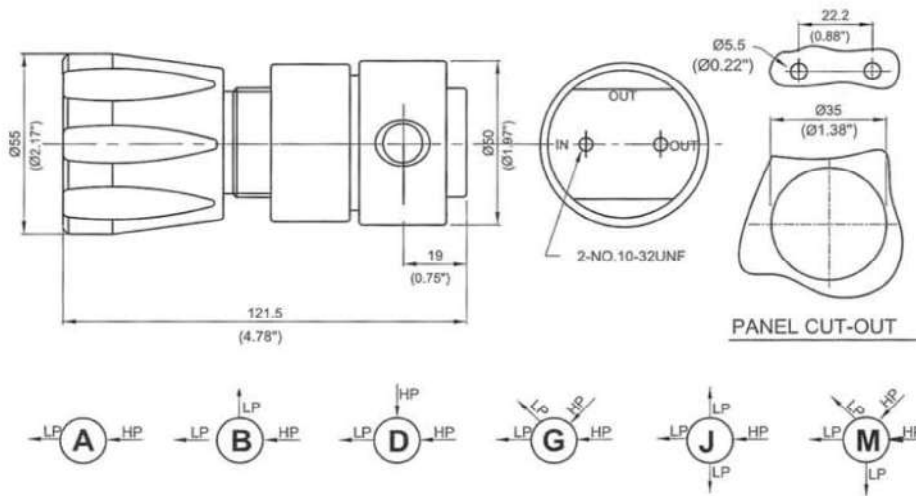
Body: SS 316L, Brass  
 Cover: SS 316L, Brass  
 Diaphragm: SS 316L  
 Filter mesh: SS 316L (10um)  
 Seat: PCTFE, PTFE  
 Spring: SS 316L  
 Poppet: SS 316L  
 Net weight: 0.9 kgs



### FLOW DATA



### DIMENSIONS



### ORDERING INFORMATION

Series	Body	Port	Input pressure	output pressure	Pressure gauge	Inlet port	Outlet port	Option
PR01	L:316L B:Brass	A B D G J M	D:3000psig E:2200psig F:500psig	F:0~500psig G:0~250psig I:0~100psig K:0~50psig L:0~25psig	M: gauge(Mpa) P: gauge(psi/bar) N: no gauge	02F:1/4"NPT(F) 02M:1/4"NPT(M) 23:CGA330 24:CGA350 27:CGA580 28:CGA660 30:CGA590 52:G5/8"-RH(F)	02F:1/4"NPT(F) 02M:1/4"NPT(M) 01T:1/8" Ferrule fitting 02T:1/4" Ferrule fitting 03T:3/8" Ferrule fitting 6T:6mm Ferrule fitting 8T:8mm Ferrule fitting	P: Panel mount S: Safety valve N: Needle valve